



**DRUTEX**  
ENGINEERED FOR YOU

# Special offer

## of Drutex aluminum doors

with both-side aligned door panel



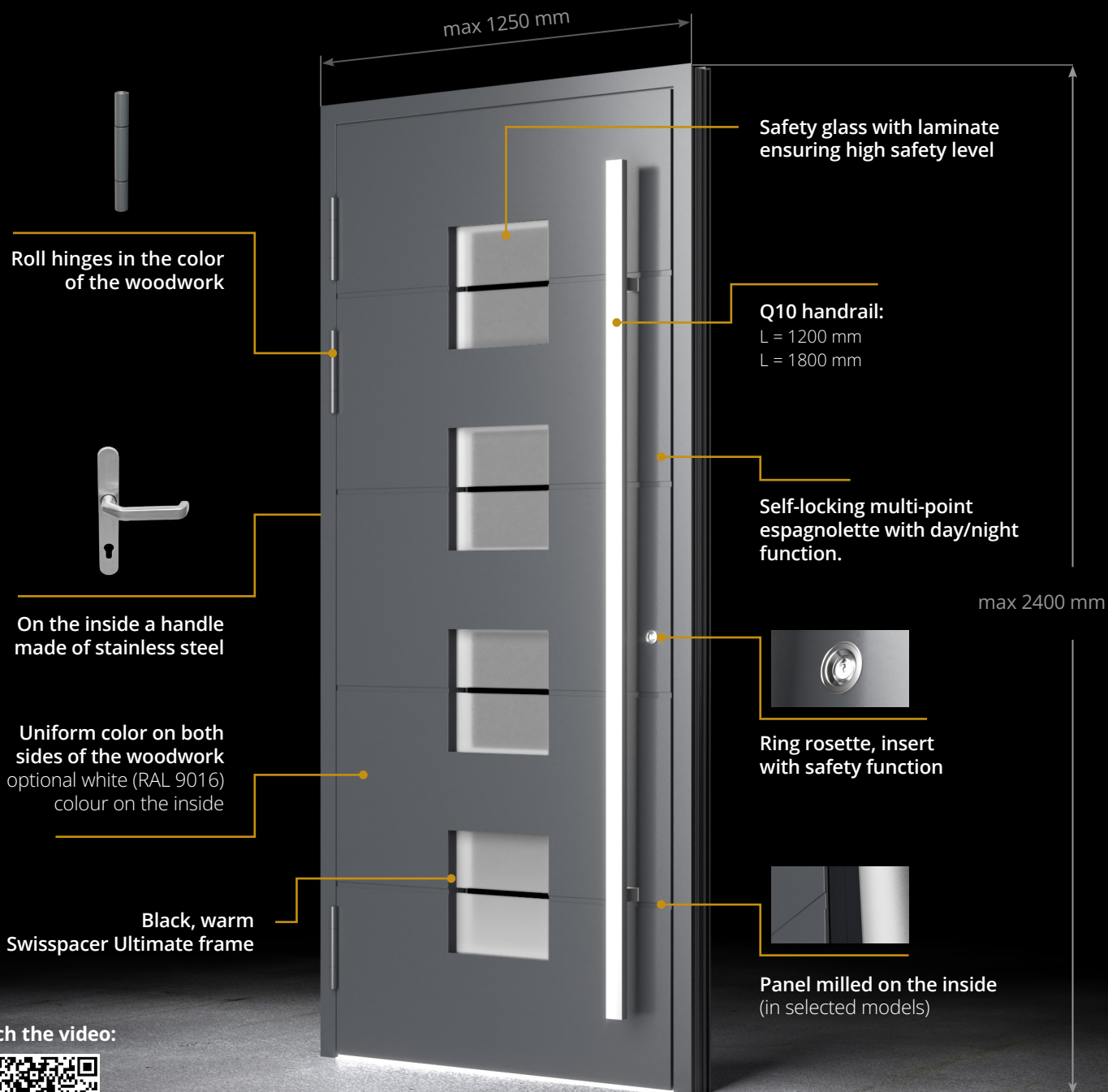
good value for money



short lead time

**HQ**

high quality components








Watch the video:



Doors with standard equipment



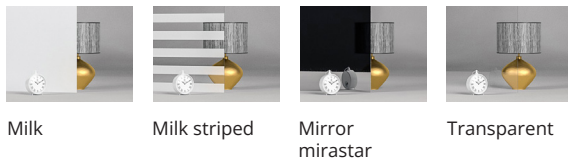
## OPTIONAL

-  doors of larger dimensions are also available on request
-  double door bolt can be fitted with a motor to increase comfort of use and level of security
-  can be fitted with Siegenia concealed axent hinges
-  choice of handrails and handle
-  can be equipped with additional solutions, such as ekey or Idencom (intelligent access systems using Bluetooth, a fingerprint reader, code card or electronic keyring)



## Select

### Available glazing <sup>S</sup>



Milk      Milk striped      Mirror mirastar      Transparent

### Colour <sup>S</sup>

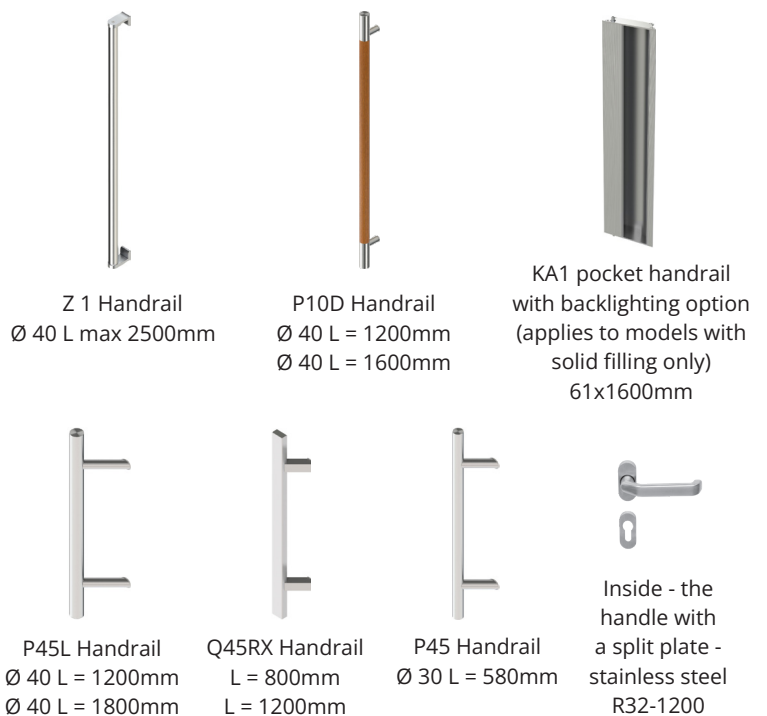
#### Matt



#### Structural



### Handrails, handle <sup>P</sup>



### Door models available in promotion



Washington Zero      Montana 4      Washington 1      Hawaii 4      Washington 3      Arizona 1      New York 2      Washington Pocket

## Drutex S.A.

Łęborska 31 • 77-100 Bytów • Poland

The information presented in this advertising material is for reference only.

<sup>S</sup> as standard

<sup>P</sup> surcharge

+48 59 822 91 01

+48 59 822 91 04

www.drutex.eu

drutex@drutex.com.pl